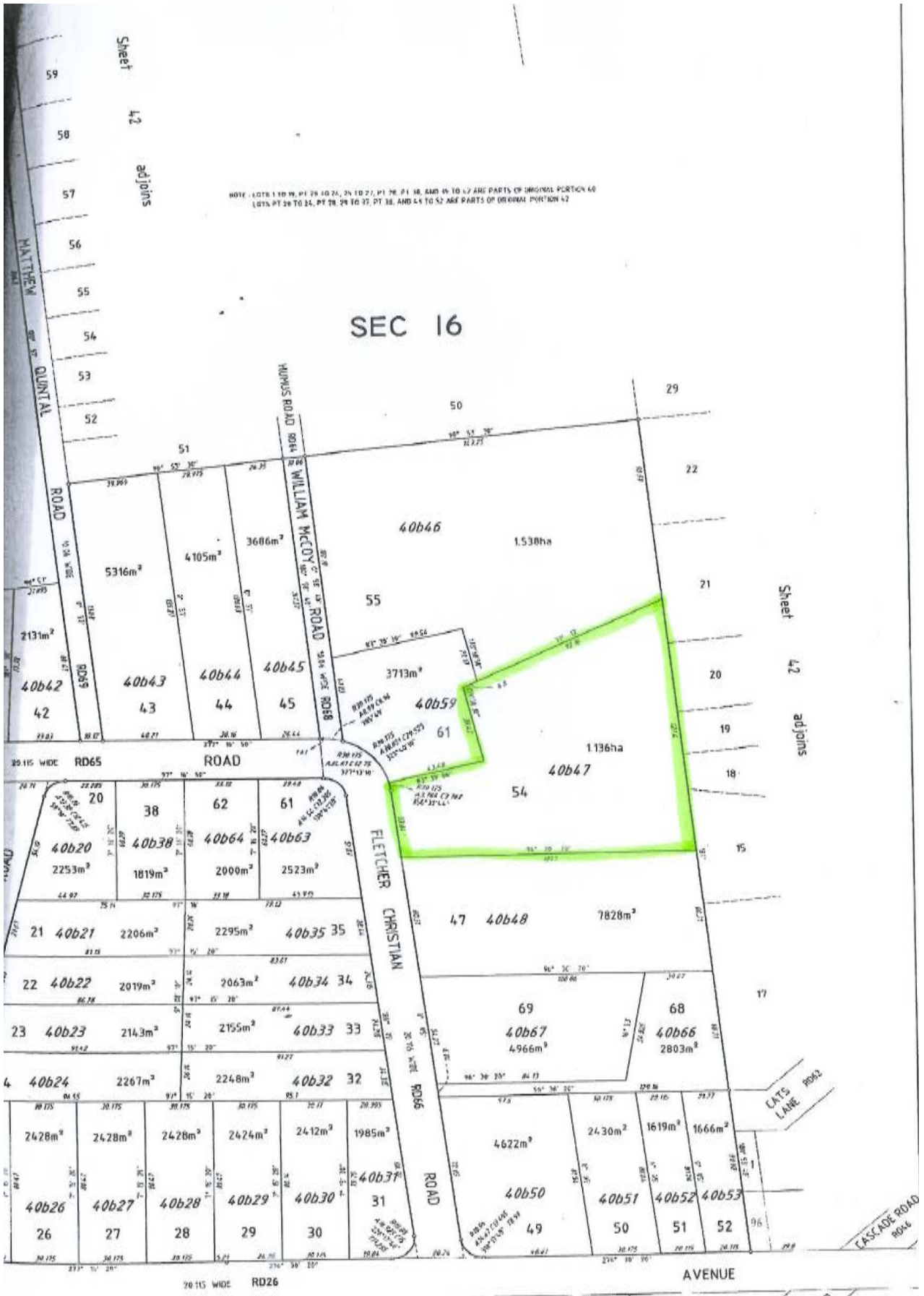




LEASE OF TANALITH PLANT EXPRESSION OF INTEREST – 06/17

ADDITIONAL INFORMATION

Government Business Enterprise	The Tanalith Plant
Business Activity	Copper-Chrome-Arsenic timber treatment plant
Physical Location	24 Fletcher Christian Road
Land Title	Portion 40b47, lot 54, Section 15
Land area	1.136ha
Land Zoning	Special Use: Industry – Noxious, Hazardous or Offensive (Tanalising works), Public Works – Major, and Depot
Asset Inventory	<ul style="list-style-type: none"> • Tanalith Building - Office and storage structure awning with concrete/bitumen surface-office area & plant Store approx 8.2m x 9.5m. Awning 9.6m x 12.8m & 4.5m x 3.1m • Substation/Transformer Location - Tanalith plant 50 kVA Capacity - 53 • Pressure Cylinder recycle system for timber treatment including "GRUNDFOS" Model Transfer pumps (1966) • "RJ MURRAY" D676 cylinder system- 30 foot length • Steel mixer tank approx. 3,800 Litre capacity • Pressure tank cylinder - approx 150 litre on top of main treatment • 2 x Storage Tank cco- 7709 Litre capacity x 2 (circa 1966) • Unbranded model older mixing tank mixer • Pompetravaini TRHE 40/-140C Vacuum pump with 5.5kW electric motor • "TCM" Model diesel forklift, 1,500kg lift capacity and forklift hydraulic attachment (Rego: A-17) 1998 • Timber clad water tank 10,000 gallons (approx 37,800 Litres)
	<ul style="list-style-type: none"> • EBARA Chemical pump • Onga water pump • Davey transfer pump



8 7 5 4 2 1

43 adjoins

SEC 17